

8-P Gigabit + 2-P SFP(100/1G) Slot L2+ Managed Switch

OVERVIEW

1418M-S8002IL2 is a Layer 2 full gigabit managed switch, featuring 8-port 10/100/1000Base-T RJ45 and 2*1G/2.5G SFP ports. It's designed for modern enterprise networks with powerful Layer 2 management and high-performance switching capabilities. This cost-effective Gigabit Ethernet solution suits enterprises adopting new IT technologies like voice over IP and video conferencing to enhance productivity and reduce costs.

1418M-S8002IL2 provides comprehensive end-to-end QoS, efficiently prioritizing and managing traffic to ensure critical applications receive the necessary bandwidth. Its flexible and rich management and security settings empower administrators to customize the network, enhancing data security. The switch's smart features make it an excellent choice for high-speed, secure, and cost-effective solutions for enterprise networks.

As corporations adopt advanced IT technologies, the switch serves as a reliable and scalable solution to meet their evolving needs. It caters to bandwidth-intensive applications, enabling businesses to improve productivity and embrace digital transformation. The switch's feature-rich management options, end-to-end QoS capabilities, and focus on security deliver a seamless and efficient network experience, making it an ideal choice for cost-effective high-performance solutions in enterprise networks.



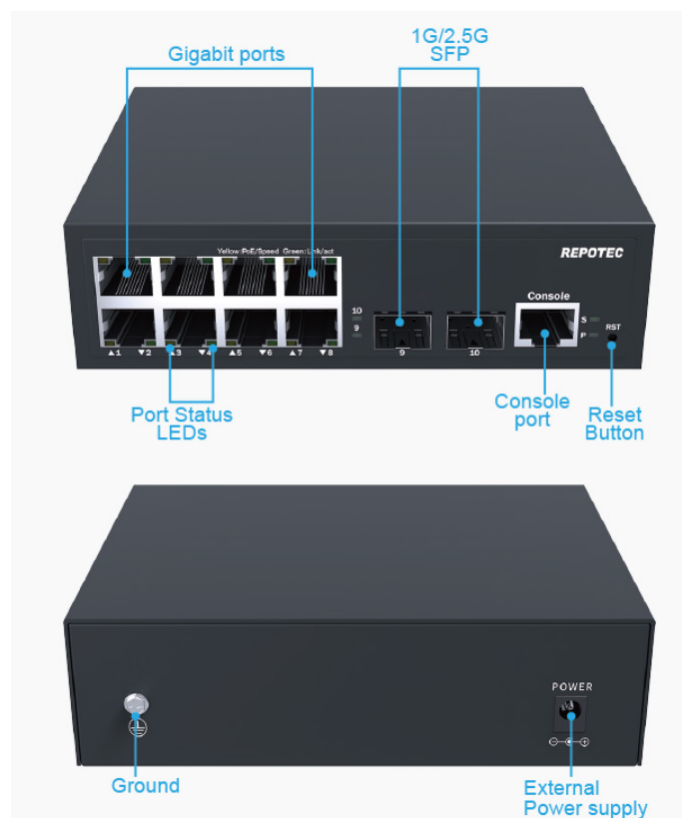
CHARACTERISTICS

- Supports GE ports, 2.5GE port aggregation, static, and dynamic aggregation
- Supports access, trunk, hybrid mode, and VLAN classification, including Mac-based, IP-based, and protocol-based VLANs
- Supports port-based, VLAN-based, and flow-based QinQ
- Supports STP, RSTP, MSTP, G.8032 ERPS protocol, single ring, sub ring
- IGMP snooping, Port Mirroring, Port isolation and QoS
- Supports Dot1x, port authentication, MAC authentication, RADIUS service
- Supports port-security, IP source guard, IP/Port/MAC binding, ARP-check, and ARP packet filtering
- Supports LLDP, SNMPV1/V2C/V3, web management (HTTP1.1, HTTPS), Syslog, and alarm grading
- RMON (Remote Monitoring) alarm, event, and history record
- NTP, temperature monitoring, Ping, Tracert, and optical transceiver DDM function
- Supports TFTP Client, Telnet Server, SSH Server, and IPv6 Management
- Firmware update, configure backup/restore through Web GUI, FTP, and TFTP

ORDERING

1418M-S8002IL2

8-P Gigabit + 2-P SFP(100/1G) slot
L2+ Managed Switch



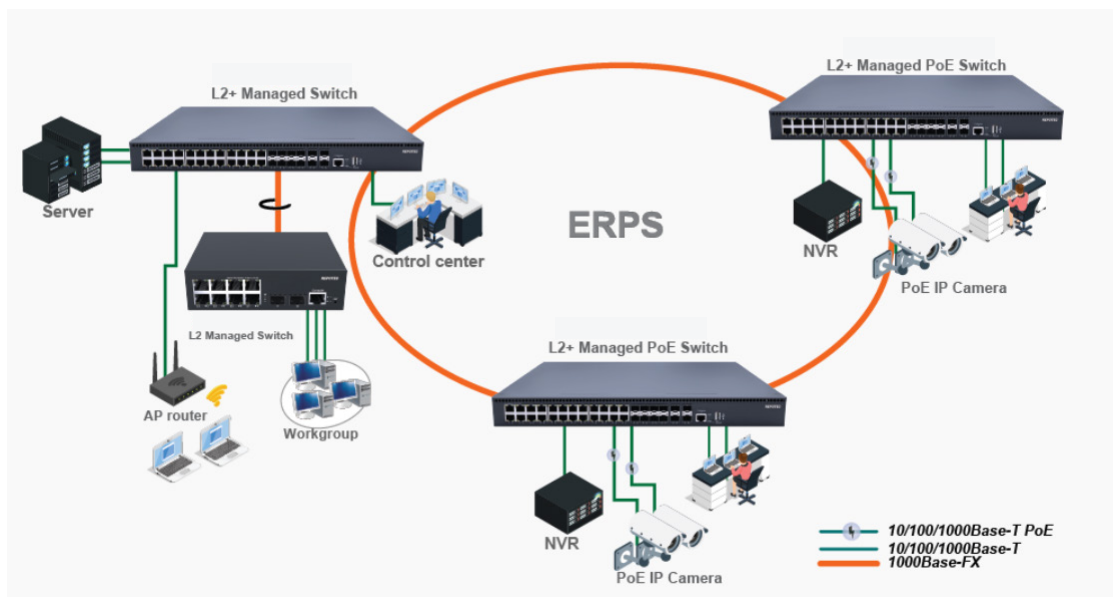
| SPECIFICATIONS

Standards	IEEE 802.3/3u 10Base-T, 100Base-TX Ethernet IEEE 802.3ab 1000Base-T Ethernet IEEE 802.3z 1000Base-X Ethernet IEEE 802.3x Flow Control capability IEEE802.3az Energy Efficient Ethernet
Interface	8 x 100/1000M ports 2 x 1G/2.5G SFP ports 1 x RJ45 console port
Forwarding Capacity	38.6Mpps
Switching Capacity	26 Gbps
Buffer	12M bit
MAC Table	16K MAC addresses

| MECHANICAL STRUCTURE

Fan	Fanless, natural heat dissipation
Ethernet ports surge protection	4KV, IEC 61000-4-5 Level 4 (10/700us)
Power Consumption	10W
Power Supply	External Power adapter 12V/1A
Environment	Operating temperature: 0°C to 50°C Operating Humidity: 10 to 90% (Non-Condensing)
Dimension	152*115*44mm (WxDxH)
Certification	CE, FCC

| APPLICATION



| LAYER 2 FUNCTION

Port aggregation	Support GE port, 2.5GE aggregation Support static and dynamic aggregation
Port features	Support IEEE802.3x flow control, Port traffic statistics, port isolation Support network storm suppression based on port bandwidth percentage
VLAN	Support access, trunk and hybrid mode
VLAN Classification	Mac Based VLAN IP Based VLAN Protocol Based VLAN
QinQ	Basic QinQ (Port-based QinQ) Flexible QinQ (VLAN-based QinQ) QinQ (Flow-based QinQ)
Port mirroring	Many to one (Port Mirroring)
Layer 2 ring network protocol	Support STP/RSTP/MSTP Support G.8032 ERPS protocol, single ring, sub ring and other ring
DHCP	DHCP Client DHCP Snooping
Multicast	IGMP snooping
ACL	IP Standard ACL MAC extend ACL IP extend ACL
QoS	QoS Class, Remarking Support SP, WRR queue scheduling Ingress Port-based Rate-limit Egress Port-based Rate-limit Policy-based QoS
Security	Support Dot1x, port authentication, mac authentication, RADIUS service Support port-security Support ip source guard, IP/Port/MAC binding Support ARP-check and ARP packet filtering for illegal users Support port isolation
Management and maintenance	Support LLDP Support user management and login authentication Support SNMPV1/V2C/V3 Support web management, HTTP1.1, HTTPS Support Syslog and alarm grading Support RMON (Remote Monitoring) alarm, event and history record Support NTP Support temperature monitoring Support Ping, Tracert Support optical transceiver DDM function Support TFTP Client Support Telnet Server Support SSH Server Support IPv6 Management Support FTP, TFTP, WEB upgrading